

Multi-Direction Welded Bottle Jack



IMPORTANT! PLEASE READ THESE INSTRUCTIONS CAREFULLY. NOTE ALL SAFETY INSTRUCTIONS AND WARNINGS. USE THE PRODUCT CORRECTLY AND WITH CARE FOR THE PURPOSE FOR WHICH IT IS INTENDED. FAILURE TO FOLLOW THESE INSTRUCTIONS MAY CAUSE DAMAGE TO PROPERTY AND/OR PERSONAL INJURY.

PLEASE KEEP THESE INSTRUCTIONS SAFE AND AVAILABLE FOR FUTURE REFERENCE.

CERTIFICATE OF GUARANTEE

This product is guaranteed for a period of 2 Years, with effect from the date of purchase and applies only to the original purchaser. This guarantee only applies to defects arising from, defective materials and or faulty workmanship that become evident during the guarantee period only and does not include consumable items. The manufacturer will repair or replace the product at their discretion subject to the following. That the product has been used in accordance with the guidelines as detailed in the product manual and that it has not been subjected to misuse, abuse or used for a purpose for which it was not intended. That it has not been taken apart or tampered with in any way whatsoever or has been serviced by unauthorised persons or has been used for hire purposes. Transit damage is excluded from this guarantee, for such damage the transport company is responsible. Claims made under this guarantee must be made in the first instance, directly to the retailer within the guarantee period. Only under exceptional circumstances should the product be returned to the manufacturer. In this case it shall be the consumer's responsibility to return the product at their cost ensuring that the product is adequately packed to prevent transit damage and must be accompanied with a brief description of the fault and a copy of the receipt or other proof of purchase. The manufacturer shall not be liable for any special, exemplary, direct, indirect, incidental, or consequential loss or damage under this guarantee. This guarantee is in addition to and does not affect any rights, which the consumer may have by virtue of the Sale of Goods Act 1973 as amended 1975 and 1999.

INTRODUCTION

Thank you for purchasing this product which has passed through our extensive quality assurance process. Every care has been taken to ensure that it reaches you in perfect condition. However, in the unlikely event that you should experience a problem, or if we can offer any assistance or advice please do not hesitate to contact our customer care department. For details of your nearest customer care department please refer to the telephone numbers at the back of this manual.

Safety First

Before attempting to operate this product the following basic safety precautions should always be taken to reduce the risk of fire, electric shock and personal injury. It is important to read the instruction manual to understand the application, limitations and potential hazards associated with this product.

HELPLINE & SPARE PARTS

In the unlikely event of a defect occurring please contact our Helpline.
Office hours: Monday - Friday 9:00am - 5:00pm. Telephone Number 01332 576 850

INTENDED USE

The product is made for vertical lifting of loads and for horizontal and tilted pressing of e.g. steel frames. It should not be used in the presence of acids, alkalis or other aggressive gases. The product may not be used in an explosive atmosphere.

TECHNICAL SPECIFICATIONS

Model	Capacity	Min. Height	Lifting Height	Adjustable Height	Max. Height	Base Size	N.W.
SMDW8BJPRO	8000kg	235mm	145mm	70mm	450mm	175x120mm	7.3kg
SMDW12BJPRO	12000kg	245mm	155mm	80mm	480mm	185x130mm	9.1kg
SMDW20BJPRO	20000kg	275mm	175mm	75mm	525mm	210x155mm	12.8kg

SAFETY INSTRUCTIONS

WARNING!

1. Study, understand, and follow all instructions before operating this device.
2. Do not exceed rated capacity.
3. Use only on hard, level surfaces, with less than 3 degrees of slope.
4. Lifting device only. Immediately after lifting, support the vehicle with appropriate means.
5. Do not move or dolly the vehicle while on the jack.
6. Lift only on areas of the vehicle as specified by the vehicle manufacturer.
7. No alterations shall be made to this product.
8. Only attachments and/or adapters supplied by the manufacturer shall be used.
9. Do not get under or allow anyone under the vehicle until it has been supported by jack stands.
10. Center load on saddle prior to lifting.
11. Use wheel chocks or other blocking device on opposing wheels before using jack.
12. Never use on a lawn mower or lawn tractor.
13. Do not use this jack for any use other than the manufacturer specified usage.
14. Do not rock the vehicle while working on or around equipment.
15. The following are not recommended for supporting on this equipment: Foundations, Homes, Mobile Homes, Trailers, RV's, Campers, nor Fifth Wheels, etc.
16. Failure to heed these markings may result in personal injury and/or property damage.

OPERATIONS

The owner and/or operator is responsible for providing maintenance, maintaining all decals or warning labels and while in use, maintaining the unit in good work order. If the operator is not fluent in English, the product and safety instructions shall be read to and discussed with the operator in the operator's native language by the purchaser/owner or his designee, making sure that the operator comprehends their contents. Safety information shall be emphasized and understood prior to usage. The jack shall be inspected per the instruction manual prior to use.

It is the owner and/or operators responsibility to study all WARNINGS, operating, and maintenance instructions contained on the product label and instruction manual prior to operation of this unit, The owner/operators shall retain product instructions for future reference.

RAISING THE JACK

1. Block the vehicle's wheels for lifting stability. Secure the load to prevent inadvertent shifting and movement
2. Position the jack near desired lift point.
3. Set the Parking Brake in the vehicle.
4. Refer to the vehicle manufacturer owner's manual to locate approved lifting points on the vehicle. Position the jack so that the saddle is centered and will contact the load lifting point firmly.
5. Assemble the handle, ensure that spring clips align with slots.
6. Close the release valve by turning it clockwise until it is firmly closed.
7. Before raising the vehicle double check and verify the saddle is centered and also has full contact with the lifting point.
8. Pump handle to lift until saddle contacts load. Continue to pump the jack handle to lift the vehicle to the desired height. After lifting, support the load with appropriately rated vehicle support stands before working on the vehicle.

LOWERING THE JACK

1. Raise load high enough to allow clearance for the jack stands to be removed, then carefully remove jack stands.
2. Remove support stands.
3. Grasp the handle firmly with both hands. Securely hold on to the jack handle so your hands do not slip and ensure the release valve does not rapidly lower.
4. Carefully open the Release Valve by slowly turning the handle counterclockwise. (Do not allow bystanders around the jack or under the load when lowering the jack.)
5. After removing jack from under the load, push ram and handle sleeve down to reduce exposure to rust and contamination.

INSPECTION

The product shall be maintained in accordance with the product instructions. No alterations shall be made to this product.

1. Before each use, a visual inspection shall be made for abnormal conditions such as cracked welds, damage, bent, worn, loose or missing parts.
2. Inspections shall be performed in accordance with this manual.
3. The product shall be inspected immediately if it is believed to have been subjected to abnormal load or shock. Owners and / or Operators should be aware that repair of this product may require specialized equipment and knowledge.

MAINTENANCE

Monthly Maintenance is recommended. Lubrication is critical to jacks as they support heavy loads. Any restriction due to dirt, rust, etc., can cause either slow movement or cause extremely rapid jerks, damaging the internal components. The following steps are designed to keep the jack maintained and operational.

1. Lubricate the ram, linkages, saddle and pump mechanism with light oil.
2. Visually inspect for cracked welds, bent, loose, missing parts or hydraulic oil leaks.
3. The product shall be inspected immediately if it is believed to have been subjected to abnormal load or shock.
4. Any hydraulic jack found damaged in any way, is found to be worn or operates abnormally shall be removed from service until repaired by an authorized customer service representative.
5. Clean all surfaces and maintain all labels and warnings.
6. Check and maintain the ram oil level.
7. Check the ram every three months for any sign of rust or corrosion. Clean as needed and wipe with an oil cloth. When not in use, always leave the saddle and ram all the way down.

Always store your jack in the fully lowered position. This will help protect critical areas from corrosion.

Do not use brake or transmission fluids or regular motor oil as they can damage the seals. Always purchase and use products labeled Hydraulic Jack Oil.

CHECK OIL LEVEL

1. Turn release valve counterclockwise to allow ram to fully retract. It may be necessary to apply force to the saddle for lowering.
2. With the jack in the level position, remove the oil fill plug. Stand jack in vertical position with handle socket down. The oil should be level with the bottom of fill hole. If not, top off. Do not overfill. Always fill with new, clean hydraulic jack oil.
3. Replace fill plug.
4. Check jack operation.
5. Purge air from system as required.

TROUBLE SHOOTING

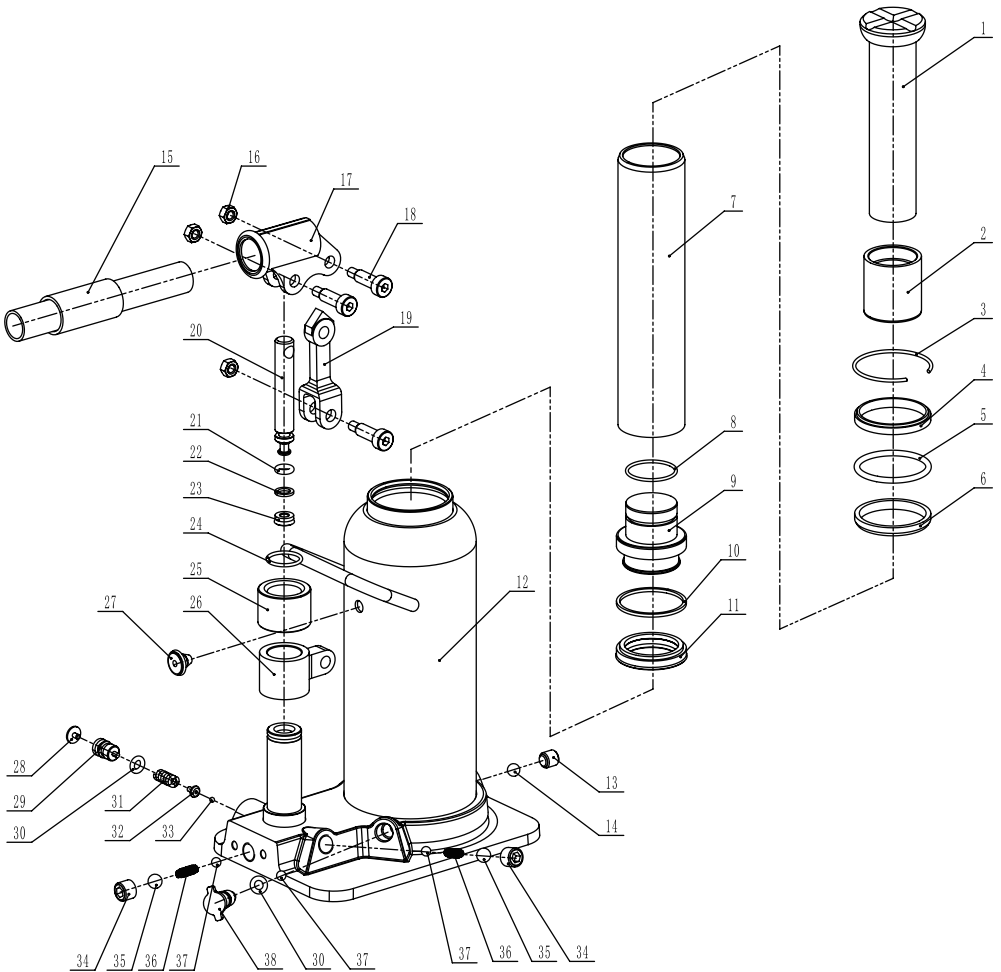
SYSTEM AIR PURGE PROCEDURE

1. Turn release valve counterclockwise one full turn to open.
2. Pump handle eight full strokes.
3. Turn release valve clockwise to close valve.
4. Pump handle until the ram reaches maximum height and continue to pump several times to remove trapped air in the ram.
6. Turn release valve counterclockwise one full turn and lower ram to the lowest position. Use force if necessary.
7. Turn release valve clockwise to closed position and check for proper pump action. It may be necessary to perform the above more than once to assume air is evacuated totally.

TROUBLESHOOTING

Problem	Possible cause	Action
The jack does not reach its full height.	Low level of oil in the jack.	Check the oil level.
	Air in the hydraulic system.	Purging air from the jack.
The load lowers down.	The relief valve does not close properly.	Contact SGS Customer Service.
	The oil is contaminated.	
	The pump valves are leaking	
	The piston is jammed.	
	Air in the hydraulic system.	Purging air from the jack.
The lifting arm does not lower.	The piston is jammed.	Contact SGS Customer Service.
	Worn parts.	
	Internal damage to the jack.	
	The return spring has broken, or come loose.	
	The lift linkage is damaged or jammed.	
	Air in the hydraulic system.	Purging air from the jack.
Imprecise movement when lifting.	Air in the hydraulic system.	Purging air from the jack.

EXPLODED PARTS DIAGRAM



EXPLODED PARTS DIAGRAM

No.	SMDW8BJPRO Description	SMDW12BJPRO Description	SMDW20BJPRO Description	Qty
1	Adjusting screw	Adjusting screw	Adjusting screw	1
2	Screw sleeve	Screw sleeve	Screw sleeve	1
3	Steel wire retaining ring	Steel wire retaining ring	Steel wire retaining ring	1
4	Upper guide ring	Upper guide ring	Upper guide ring	1
5	O-ring 34.5x4.15	O-ring 42.5x3.55	O-ring 52x5	1
6	Guide ring	Guide ring	Guide ring	1
7	Piston rod	Piston rod	Piston rod	1
8	O-ring 22.4x1.8	O-ring 28x1.8	O-ring 33.5x1.8	1
9	Piston	Piston	Piston	1
10	Back support ring 40x36x2	Back support ring 45x41x2	Back support ring 58x54x2	1
11	Y-type sealing ring 40x32x10	Y-type sealing ring 45x35x9	Y-type sealing ring 58x50x8	1
12	Base welded part	Base welded part	Base welded part	1
13	Setting screw M10x1x10	Setting screw M10x1x10	Setting screw M10x1x10	1
14	Steel ball 8	Steel ball 8	Steel ball 8	1
15	Handle tube assembly	Handle tube assembly	Handle tube assembly	1
16	Non-metal lock nut M6	Non-metal lock nut M6	Non-metal lock nut M6	3
17	Socket	Socket	Socket	1
18	Plug screw M8x20	Plug screw M8x20	Plug screw M8x20	3
19	Connecting rod	Connecting rod	Connecting rod	1
20	Pump core	Pump core	Pump core	1
21	O-ring 6.5x3	O-ring 6.5x3	O-ring 6.5x3	1
22	Back support ring 12x8x1.5	Back support ring 12x8x1.5	Back support ring 12x8x1.5	1
23	Y-shaped sealing ring	Y-shaped sealing ring	Y-shaped sealing ring	1
24	Pump body steel wire baffle ring	Pump body steel wire baffle ring	Pump body steel wire baffle ring	1
25	Upper cover	Upper cover	Upper cover	1
26	Solid of revolution	Solid of revolution	Solid of revolution	1
27	Oil plug	Oil plug	Oil plug	1
28	Safety valve cap	Safety valve cap	Safety valve cap	1
29	Pressure adjusting screw	Pressure adjusting screw	Pressure adjusting screw	1
30	O-ring 5.8x2.8	O-ring 5.8x2.8	O-ring 5.8x2.8	1
31	Safety valve spring	Safety valve spring	Safety valve spring	1
32	Spring seat	Spring seat	Spring seat	1
33	Steel ball 4	Steel ball 4	Steel ball 4	1
34	Setting screw M12x1.25x10	Setting screw M12x1.25x10	Setting screw M12x1.25x10	2
35	Steel ball 9	Steel ball 9	Steel ball 9	2
36	Steel ball stop spring	Steel ball stop spring	Steel ball stop spring	2
37	Steel ball 6	Steel ball 6	Steel ball 6	3
38	Oil return valve stem	Oil return valve stem	Oil return valve stem	1

EC DECLARATION OF CONFORMITY

1. **Product models:** SMDW8BJPRO, SMDW12BJPRO, SMDW20BJPRO

2. **Name and address of the manufacturer or his authorised representative:**



SGS Engineering (UK) Ltd
Unit 1 West Side Park, Raynesway, Derby, DE21 7AZ
Telephone: +44 (0)1332 576 850

3. **This declaration of conformity is issued under the sole responsibility of the manufacturer.**

4. **Object of the declaration:**

Equipment: 8 TON MULTI-DIRECTION WELDED BOTTLE JACK
12 TON MULTI-DIRECTION WELDED BOTTLE JACK
20 TON MULTI-DIRECTION WELDED BOTTLE JACK

Brand name: SGS

5. **The object of the declaration described above is in conformity with the relevant statutory requirements:**

Machinery Directive as amended by directive 2009/127/EC
Mobile or movable jacks and associated lifting equipment
The Supply of Machinery (Safety) Regulations 2008 Statutory instrument 2008 No.1597
The Supply of Machinery (Safety) (Amendment) Regulations 2011 Statutory instrument 2011 No.2157

6. **References to the relevant designated standards used or references to the other technical specifications in relation to which conformity is declared:**

2006/42/EC
EN1494:2000 + A1:2008

7. **The person authorized to compile the technical file:**

Name: Neil Sansom

Address: SGS Engineering (UK) Ltd, Unit 1 West Side Park, Raynesway, Derby, DE21 7AZ

Signed for and on behalf of:

Authorised Representative

Neil Sansom, CEO

Date: 08/11/2025

